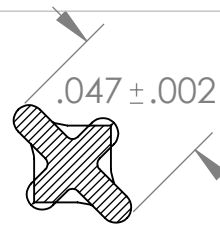
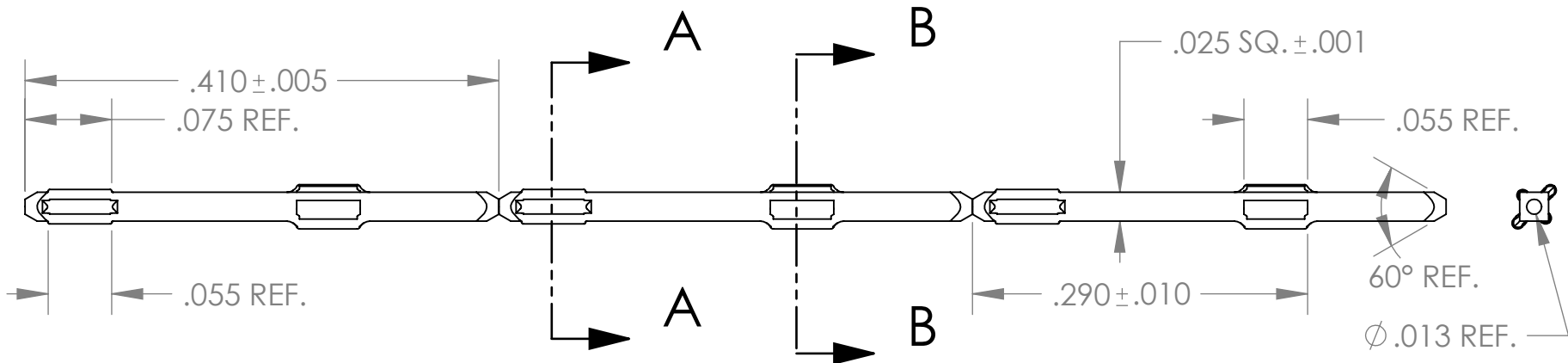


SECTION A-A
SCALE 16:1



SECTION B-B
SCALE 16:1



NOTES:

- 1) TANDEM PIN
- 2) PIN TIPS ARE PARABOLA REVOLVED
- 3) WIND LONG END FIRST ONTO REEL, END USER TO UNWIND STAR END FIRST
- 4) WIND 50,000 PER REEL
- 5) MEASURE EARS AND STAR FROM TANGENT POINT
- 6) STAR MAY RUN INTO PIN TIP
- 7) RECOMMENDED HOLE SIZE:
Cu PLATE - $\varnothing .033 \pm .003$ "
- 8) RoHS COMPLIANT

CONTROLLED DOCUMENT
MANUFACTURING / FINISH PRINT

UNLESS OTHERWISE SPECIFIED:		NAME	DATE	www.BeadElectronics.com
DIMENSIONS ARE IN INCHES		J.B.	10/23/08	
TOLERANCES:		ORIGINAL BY	8/10/10	TITLE:
FRACTIONAL ±		UPDATED BY		W025-593EAC
ANGULAR: MACH ± BEND ±		ENG APPR.		
TWO PLACE DECIMAL ±		MFG APPR.		SIZE
THREE PLACE DECIMAL ±		Q.A.		DWG. NO.
INTERPRET GEOMETRIC TOLERANCING PER:		COMMENTS:		REV
MATERIAL C197		REVS		A
FINISH		A-.410±.005 WAS .400±.005 .290±.010 WAS .280±.010 PER CUSTOMER (10/30/08)		
DO NOT SCALE DRAWING		SCALE: 1:1	WEIGHT:	SHEET 1 OF 1



PROPRIETARY AND CONFIDENTIAL
THE INFORMATION CONTAINED IN THIS DRAWING IS THE SOLE PROPERTY OF BEAD INDUSTRIES. ANY REPRODUCTION IN PART OR AS A WHOLE WITHOUT THE WRITTEN PERMISSION OF BEAD INDUSTRIES IS PROHIBITED.