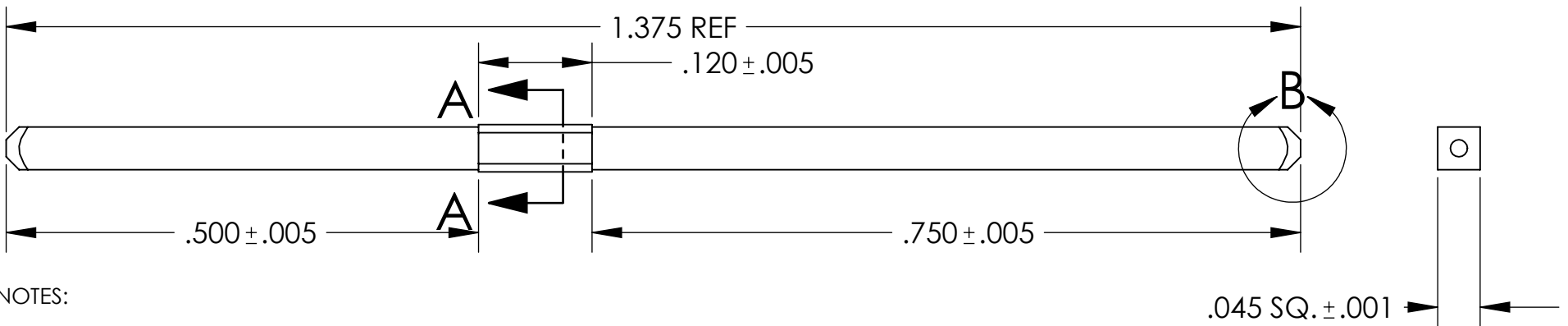
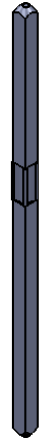
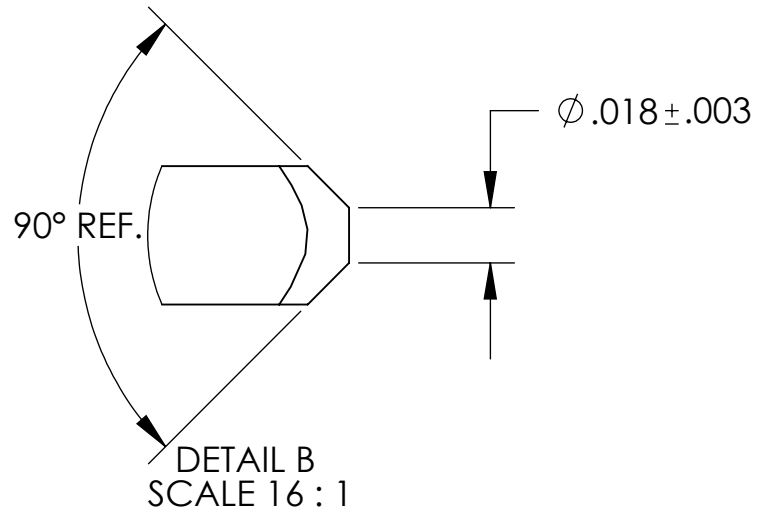
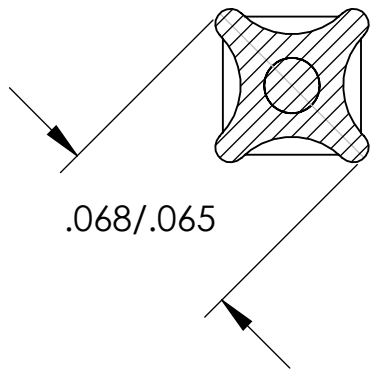


SECTION A-A
SCALE 16 : 1



NOTES:

- 1) MAX ALLOWABLE BOW .006 PER INCH
- 2) PIN TIPS ARE PARABOLA REVOLVED
- 3) TUMBLE TO MINIMIZE BURRS

UNLESS OTHERWISE SPECIFIED:

DIMENSIONS ARE IN INCHES
TOLERANCES:
FRACTIONAL ±
ANGULAR: MACH ± BEND ±
TWO PLACE DECIMAL ±
THREE PLACE DECIMAL ±

INTERPRET GEOMETRIC
TOLERANCING PER:

MATERIAL
CDA 260

FINISH

DO NOT SCALE DRAWING

	NAME	DATE
ORIGINAL BY		9/19/88
UPDATED BY	T.P.	6/25/10
ENG APPR.		
MFG APPR.		
Q.A.		

COMMENTS:

www.BeadElectronics.com

TITLE:
W045-179A

SIZE A	DWG. NO.	REV
------------------	----------	-----

SCALE: 1:1 WEIGHT: SHEET 1 OF 1



PROPRIETARY AND CONFIDENTIAL
THE INFORMATION CONTAINED IN THIS DRAWING IS THE SOLE PROPERTY OF BEAD INDUSTRIES. ANY REPRODUCTION IN PART OR AS A WHOLE WITHOUT THE WRITTEN PERMISSION OF BEAD INDUSTRIES IS PROHIBITED.